

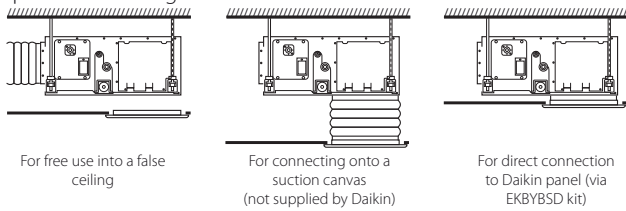
Concealed ceiling unit with medium ESP

Slimmest yet most powerful medium static pressure unit on the market

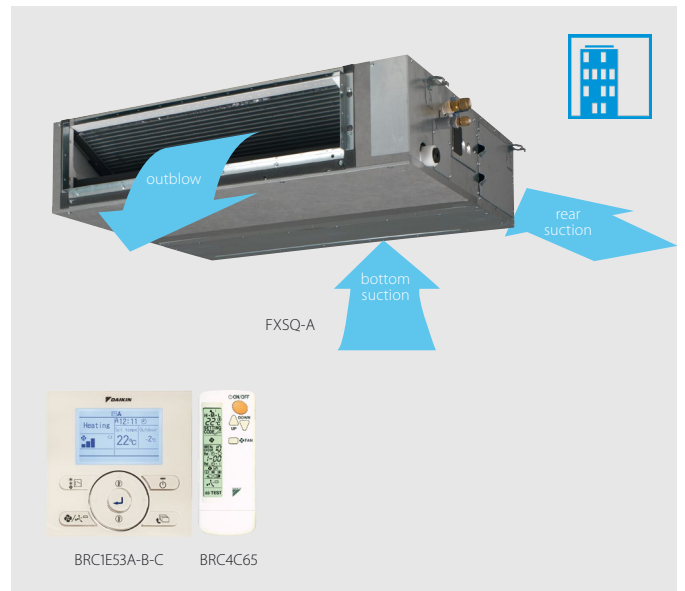
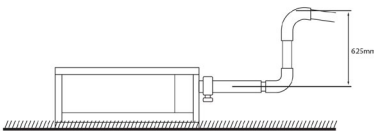
- > Slimmest unit in class, only 245mm (300mm built-in height) and therefore narrow ceiling voids are no longer a challenge



- > Whisper quiet operation: down to 25dBA sound pressure level
- > Medium external static pressure up to 150Pa facilitates using flexible ducts of varying lengths
- > Possibility to change ESP via wired remote control allows optimisation of the supply air volume
- > Discretely concealed in the wall: only the suction and discharge grilles are visible
- > 15 class unit especially developed for small or well-insulated rooms, such as hotel bedrooms, small offices, etc.
- > Reduced energy consumption thanks to specially developed DC fan motor and drain pump
- > Optional fresh air intake
- > Flexible installation: air suction direction can be altered from rear to bottom suction and choice between free use or connection to optional suction grilles



- > Standard built-in drain pump with 625mm lift increases flexibility and installation speed



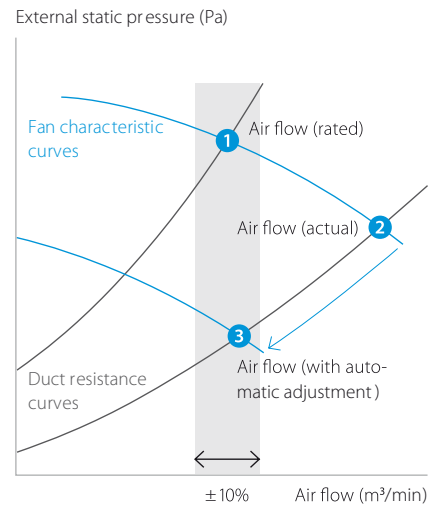
Automatic Airflow Adjustment function

Automatically selects the most appropriate fan curve to achieve the units' nominal air flow within $\pm 10\%$

Why?

After installation the real ducting will frequently differ from the initially calculated air flow resistance \rightarrow the real air flow may be much lower or higher than nominal, leading to a lack of capacity or uncomfortable air temperature

Automatic Airflow Adjustment function will adapt the unit's fan speed to any ducting automatically (10 or more fan curves are available on every model), making installation much faster

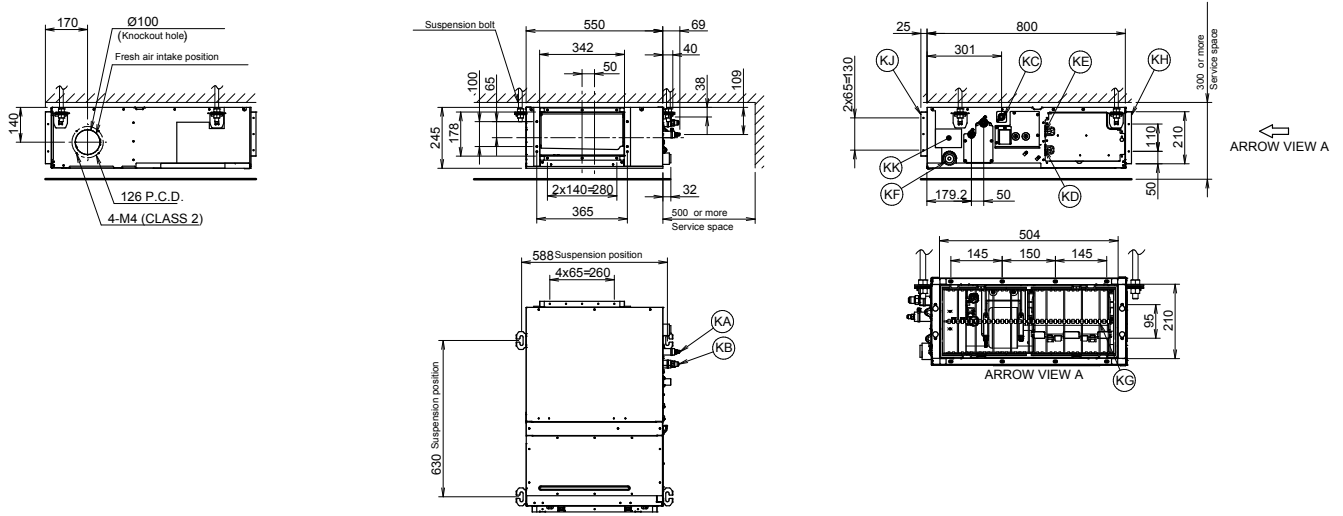


Indoor unit			FXSQ	15A	20A	25A	32A	40A	50A	63A	80A	100A	125A	140A	
Cooling capacity	Nom.		kW	1.7	2.2	2.8	3.6	4.5	5.6	7.1	9.0	11.2	14.0	16.0	
Heating capacity	Nom.		kW	1.9	2.5	3.2	4.0	5.0	6.3	8.0	10.0	12.5	16.0	18.0	
Power input - 50Hz	Cooling	Nom.	kW	0.041			0.045	0.092	0.095		0.121	0.157	0.214	0.243	
	Heating	Nom.	kW	0.038			0.042	0.089	0.092		0.118	0.154	0.211	0.240	
Dimensions	Unit	Height	mm	245											
		Width	mm	550			700			1,000			1,400		1,550
		Depth	mm	800											
Weight	Unit		kg	23.5			24	28.5	29	35.5	36.5	46	47	51	
Casing	Colour			Not painted (galvanised)											
	Material			Galvanised steel plate											
Fan-Air flow rate - 50Hz	Cooling	High/Nom./Low	m ³ /min	8.7/7.5/6.5	9/7.5/6.5	9.5/8/7.0	15/12.5/11	15.2/12.5/11	21.0/18/15	23/19.5/16	32/27/23	36/31.5/26	39/34/28		
	Heating	High/Nom./Low	m ³ /min	8.7/7.5/6.5	9/7.5/6.5	9.5/8/7	15/12.5/11	15.2/12.5/11	21/18/15	23/19.5/16.0	32/27/23	36/31.5/26	39/34/28		
Fan-External static pressure - 50Hz	High/Nom.		Pa	150/30						150/40			150/50		
Air filter	Type			Resin net with mold resistance											
Sound power level	Cooling	Nom.	dBA	54			55	60	59	61			64		
	Heating	High/Nom./Low	dBA	29.5/28/25	30/28/25	31/29/26	35/32/29	33/30/27	35/32/29	36/34/31	39/36/33	41.5/38/34			
Refrigerant	Type			R-410A											
	GWP			2,087.5											
Piping connections	Liquid	OD	mm	6.35						9.52					
	Gas	OD	mm	12.7						15.9					
	Drain			VP20 (I.D. 20/O.D. 26)											
Power supply	Phase/Frequency/Voltage		Hz/V	1~/50/60/220-240/220											
Current - 50Hz	Maximum fuse amps (MFA)		A	16											
Control systems	Infrared remote control			BRC4C65											
	Wired remote control			BRC1E53A / BRC1E53B / BRC1E53C / BRC1D52											
	Simplified wired remote control for hotel applications			BRC2E52C (heat recovery type) / BRC3E52C (heat pump type)											



Detailed technical drawings

FXSQ15-32A

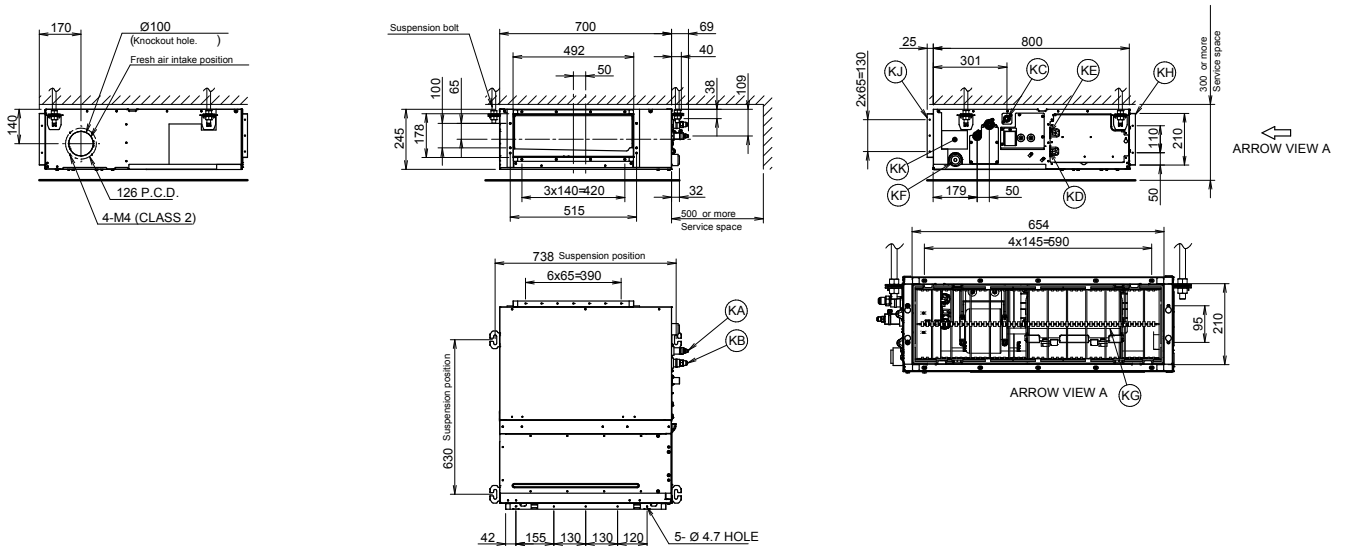


Item	Name	Description
KA	Liquid pipe connection port	Ø6.35 flared connection
KB	Gas pipe connection port	Ø12.70 flared connection
KC	Drain pipe connection	VP20 (OD Ø26, ID Ø20)
KD	Wiring connection	/
KE	Power supply connection	/
KF	Drain outlet	VP20 (OD Ø26, ID Ø20)
KG	Air filter	/
KH	Air suction side	/
KJ	Air discharge side	/
KK	Nameplate	/

Notes
 1. When installing optional accessories, refer to their respective documentation.
 2. The ceiling depth varies according to the documentation of the specific system.

3D094888A

FXSQ40-50A



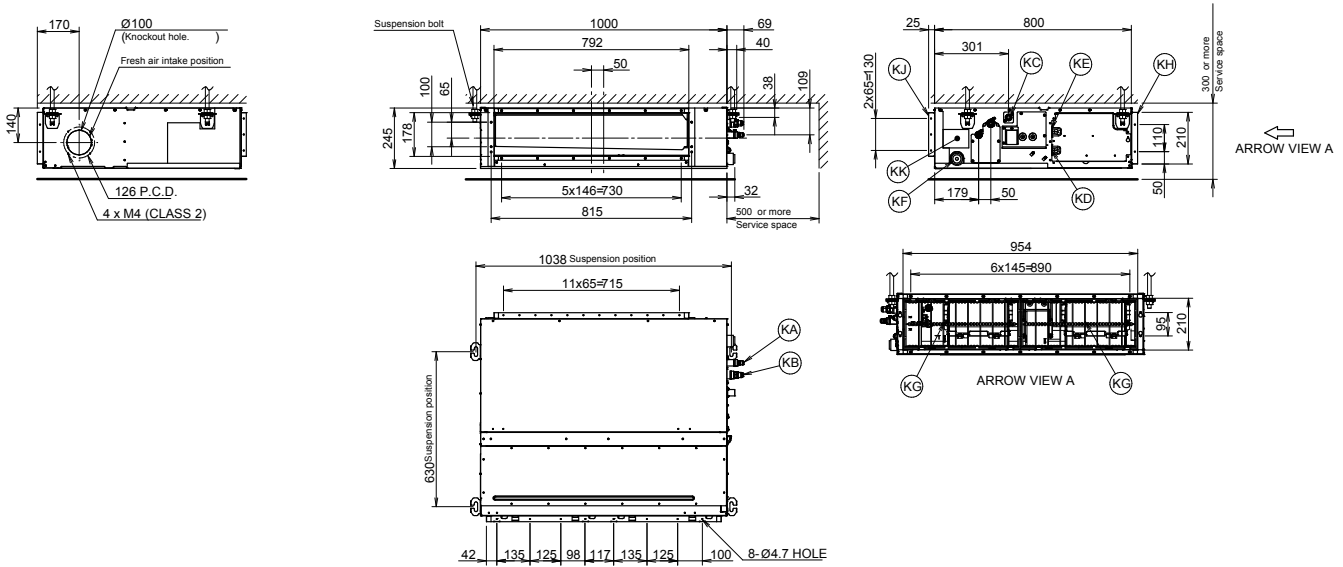
Item	Name	Description
KA	Liquid pipe connection port	Ø6.35 flared connection
KB	Gas pipe connection port	Ø12.70 flared connection
KC	Drain pipe connection	VP20 (OD Ø26, ID Ø20)
KD	Wiring connection	/
KE	Power supply connection	/
KF	Drain outlet	VP20 (OD Ø26, ID Ø20)
KG	Air filter	/
KH	Air suction side	/
KJ	Air discharge side	/
KK	Nameplate	/

Notes
 1. When installing optional accessories, refer to their respective documentation.
 2. The ceiling depth varies according to the documentation of the specific system.

3D094919A



FXSQ63-80A

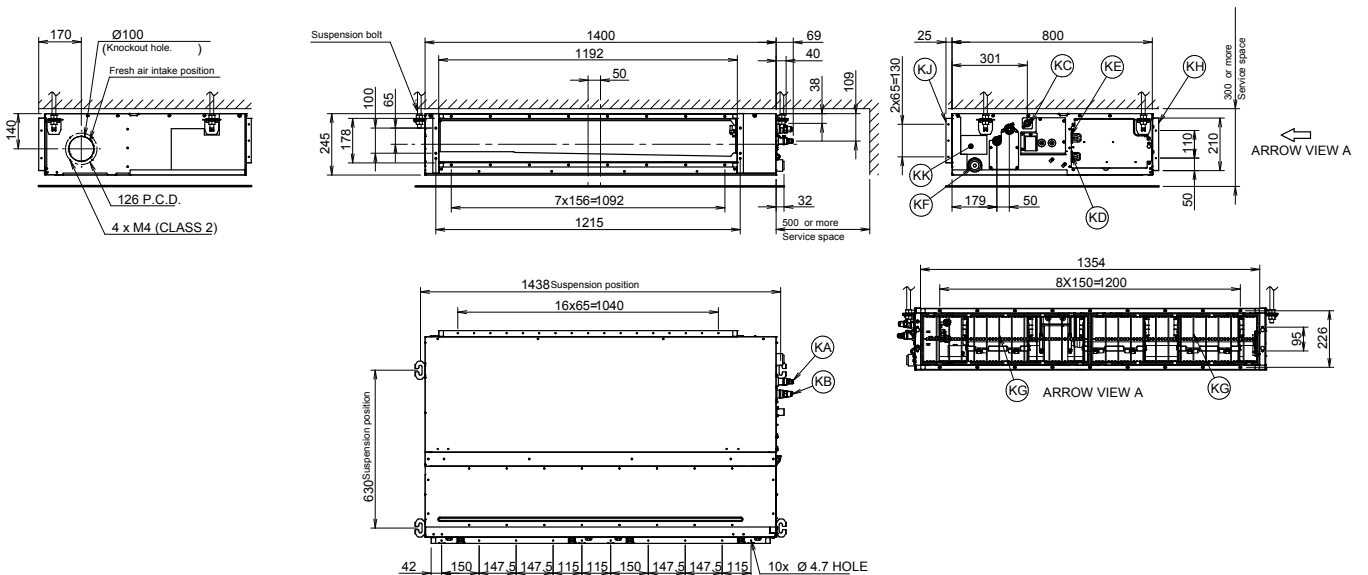


Item	Name	Description
KA	Liquid pipe connection port	Ø9.52 flared connection
KB	Gas pipe connection port	Ø15.90 flared connection
KC	Drain pipe connection	VP20 (OD Ø26, ID Ø20)
KD	Wiring connection	/
KE	Power supply connection	/
KF	Drain outlet	VP20 (OD Ø26, ID Ø20)
KG	Air filter	/
KH	Air suction side	/
KJ	Air discharge side	/
KK	Nameplate	/

Notes
 1. When installing optional accessories, refer to their respective documentation.
 2. The ceiling depth varies according to the documentation of the specific system.

3D094916A

FXSQ100-125A



Item	Name	Description
KA	Liquid pipe connection port	Ø9.52 flared connection
KB	Gas pipe connection port	Ø15.90 flared connection
KC	Drain pipe connection	VP20 (OD Ø26, ID Ø20)
KD	Wiring connection	/
KE	Power supply connection	/
KF	Drain outlet	VP20 (OD Ø26, ID Ø20)
KG	Air filter	/
KH	Air suction side	/
KJ	Air discharge side	/
KK	Nameplate	/

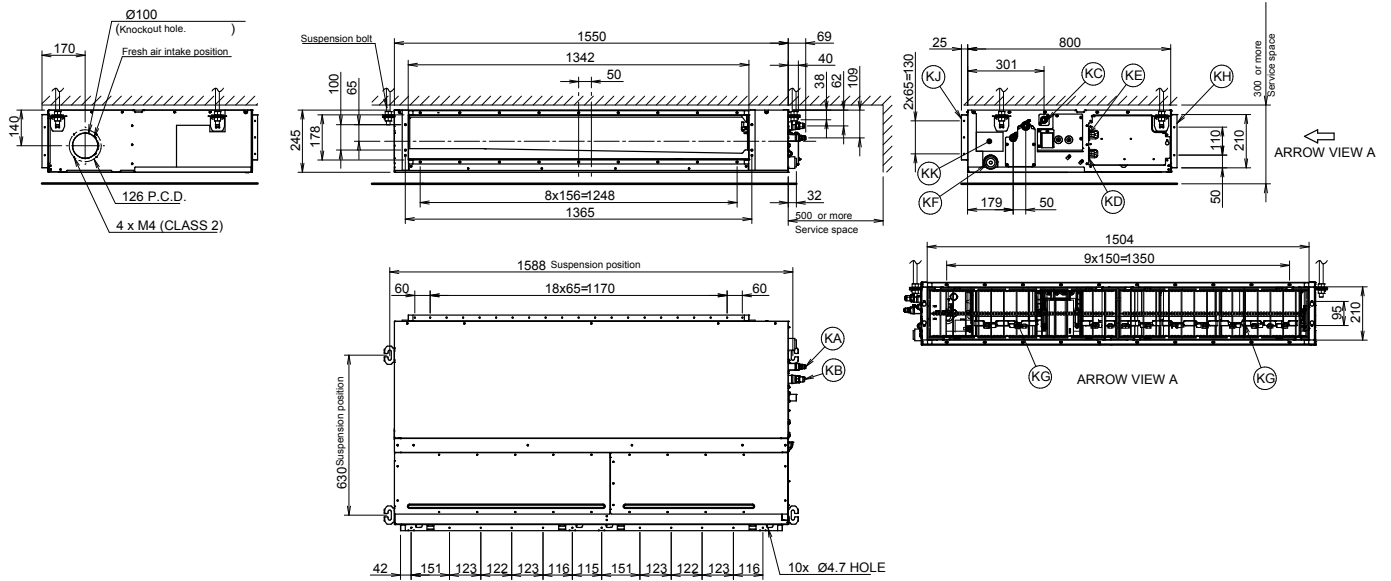
Notes
 1. When installing optional accessories, refer to their respective documentation.
 2. The ceiling depth varies according to the documentation of the specific system.

3D094917A



Detailed technical drawings

FXSQ140A

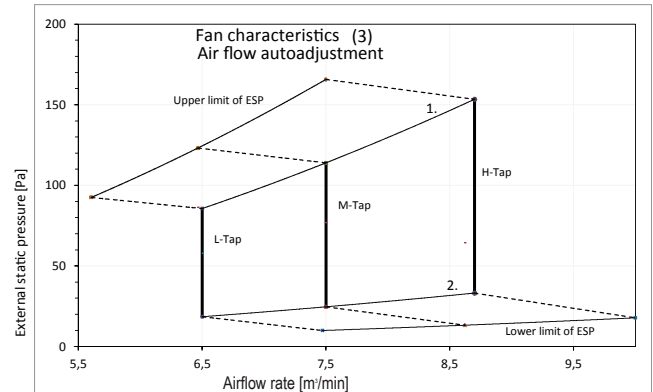
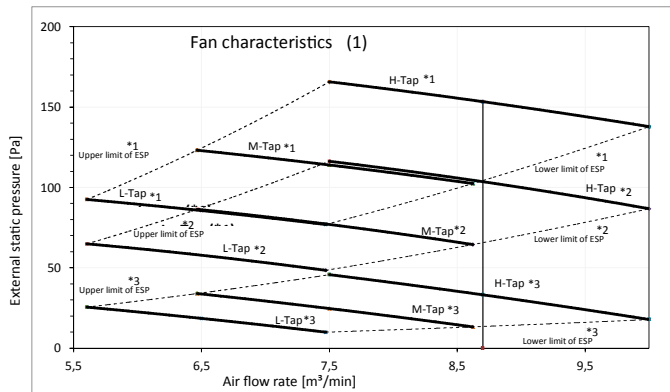


Item	Name	Description
KA	Liquid pipe connection port	Ø9.52 flared connection
KB	Gas pipe connection port	Ø15.90 flared connection
KC	Drain pipe connection	VP20 (OD Ø26, ID Ø20)
KD	Wiring connection	/
KE	Power supply connection	/
KF	Drain outlet	VP20 (OD Ø26, ID Ø20)
KG	Air filter	/
KH	Air suction side	/
KJ	Air discharge side	/
KK	Nameplate	/

Notes
 1. When installing optional accessories, refer to their respective documentation.
 2. The ceiling depth varies according to the documentation of the specific system.

3D094928A

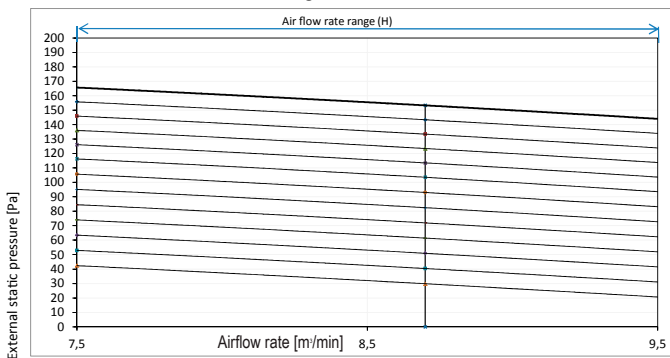
FXSQ15A



1. Upper limit of ESP by air flow auto adjustment
 2. Lower limit of ESP by air flow auto adjustment

Mark	ESP [Pa]
*1	MAX 150
*2	- 100
*3	STD 50

Fan characteristics (2)
 Field setting with remote control

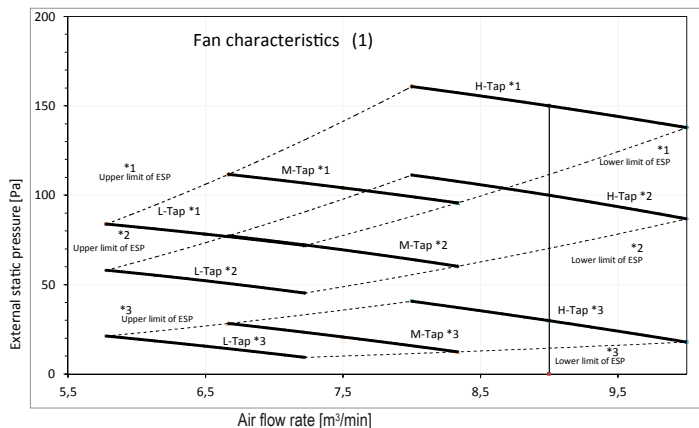


Notes
 1. The fan characteristics shown are in "fan only" mode.
 2. ESP: External Static Pressure

3D096999

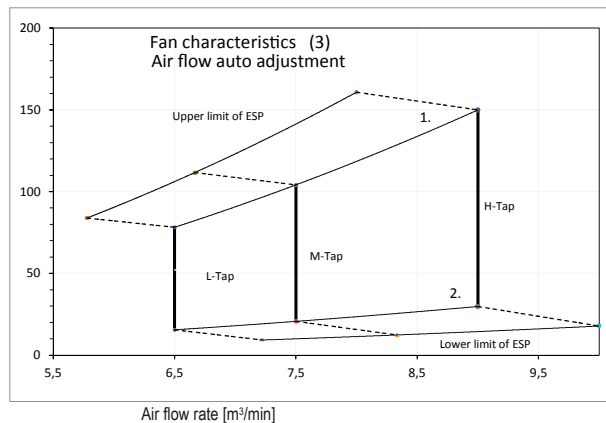
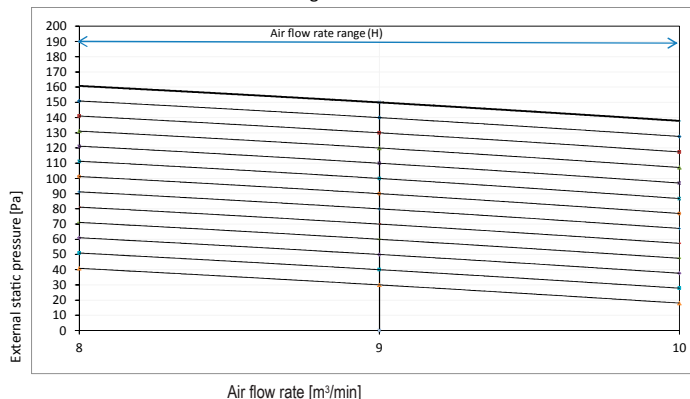


FXSQ20-25A



Mark		ESP [Pa]
*1	MAX	150
*2	-	100
*3	STD	30

Fan characteristics (2)
Field setting with remote control

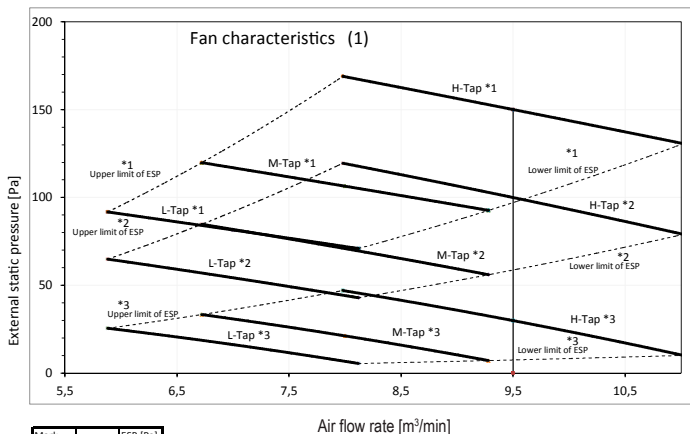


1. Upper limit of ESP by air flow auto adjustment
2. Lower limit of ESP by air flow auto adjustment

- Notes
1. The fan characteristics shown are in "fan only" mode.
 2. ESP: External Static Pressure

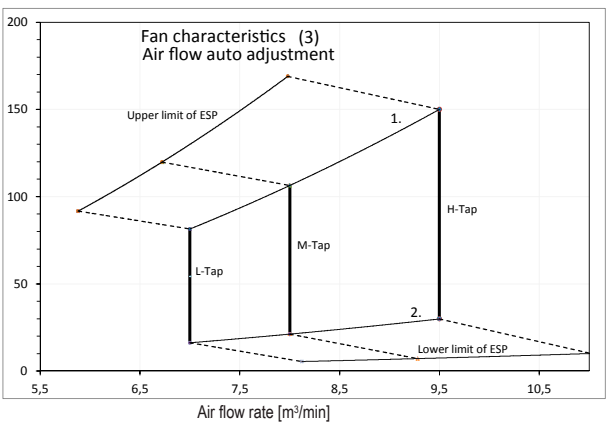
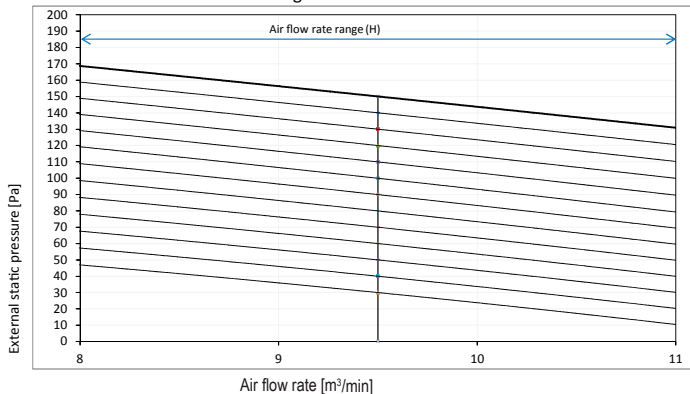
3D095680A

FXSQ32A



Mark		ESP [Pa]
*1	MAX	150
*2	-	100
*3	STD	30

Fan characteristics (2)
Field setting with remote control



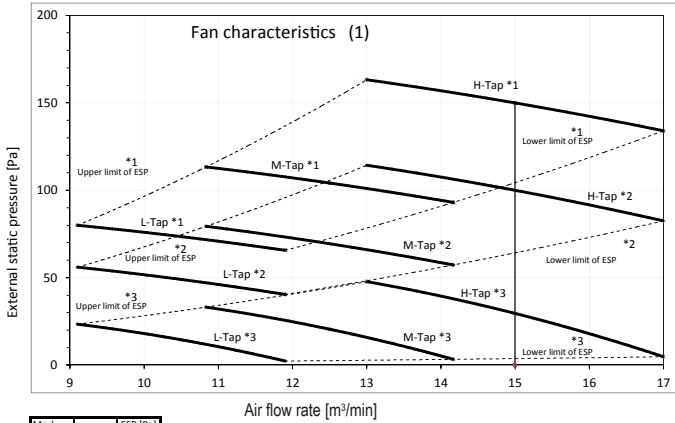
1. Upper limit of ESP by air flow auto adjustment
2. Lower limit of ESP by air flow auto adjustment

- Notes
1. The fan characteristics shown are in "fanonly" mode.
 2. ESP: External Static Pressure

3D095681A

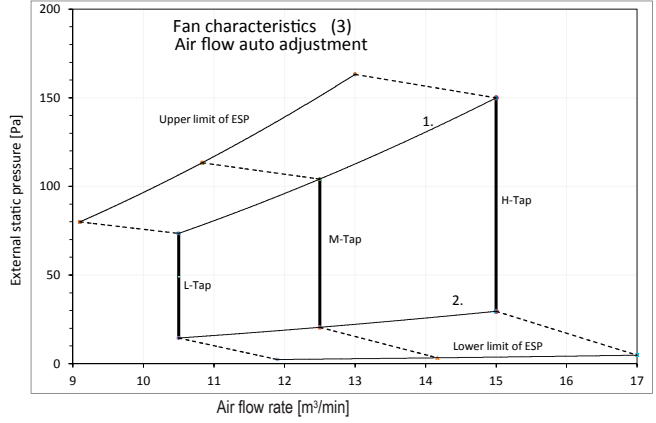
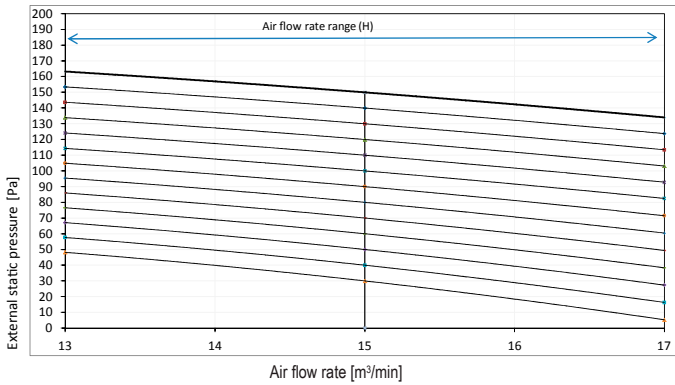


FXSQ40A



Mark		ESP [Pa]
*1	MAX	150
*2		100
*3	STD	30

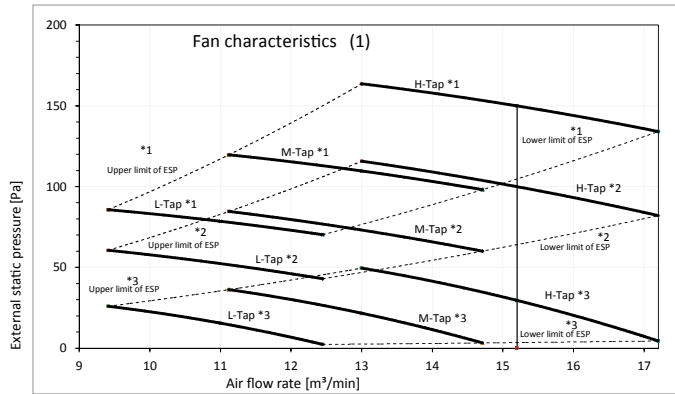
Fan characteristics (2)
Field setting with remote control



- Notes
1. The fan characteristics shown are in "fan only" mode.
 2. ESP: External Static Pressure

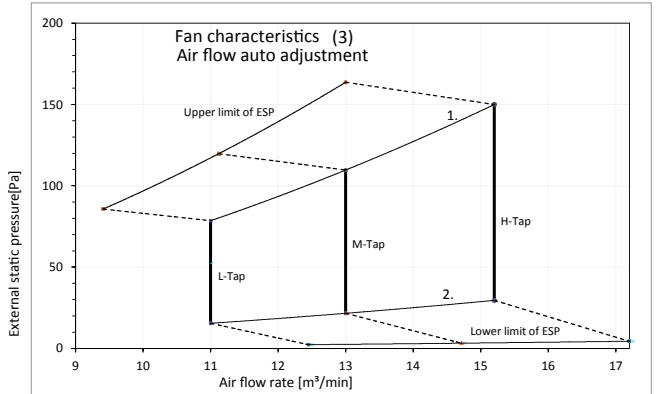
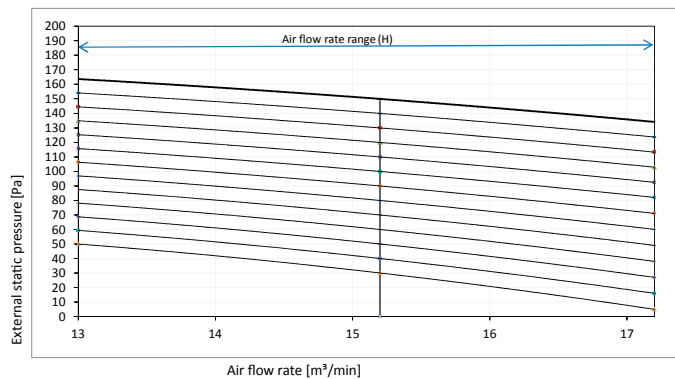
3D095682A

FXSQ50A



Mark		ESP [Pa]
*1	MAX	150
*2		100
*3	STD	30

Fan characteristics (2)
Field setting with remote control

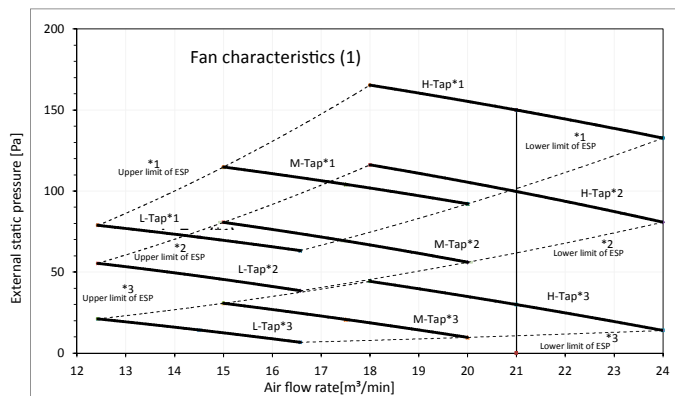


- Notes
1. The fan characteristics shown are in "fan only" mode.
 2. ESP: External Static Pressure

3D095688A

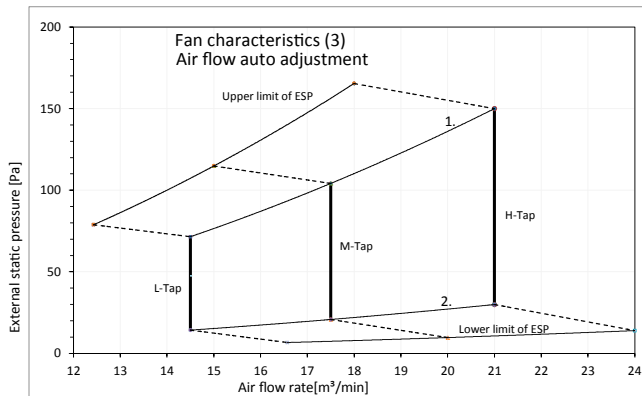
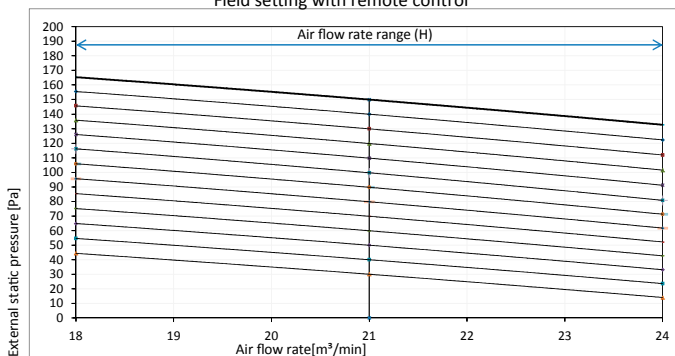


FXSQ63A



Mark	ESP [Pa]
*1	150
*2	100
*3	30

Fan characteristics (2)
Field setting with remote control

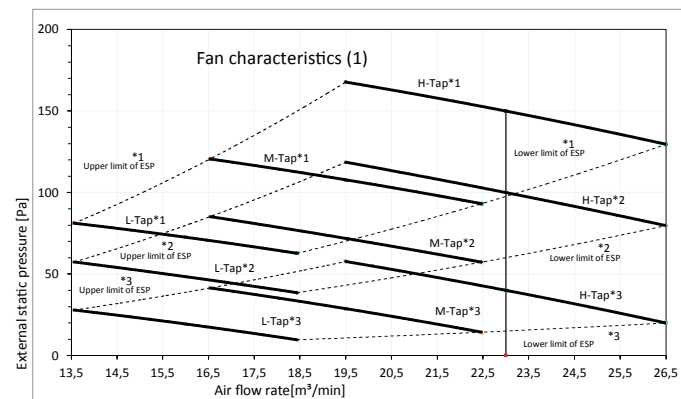


1. Upper limit of ESP by air flow auto adjustment
2. Lower limit of ESP by air flow auto adjustment

Notes
1. The fan characteristics shown are in "fan only" mode.
2. ESP: External Static Pressure

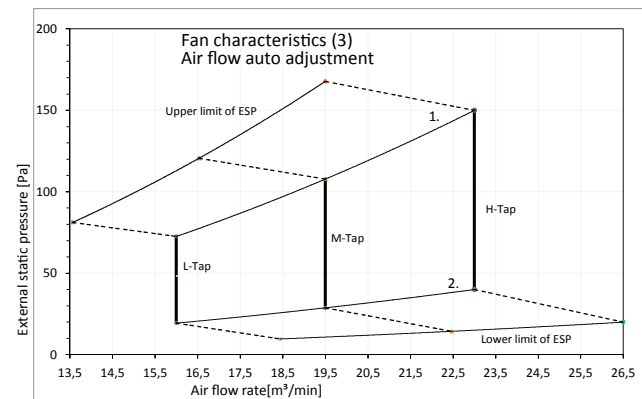
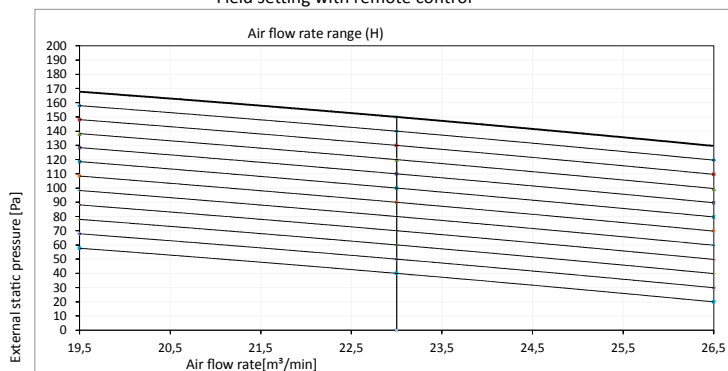
3D095690A

FXSQ80A



Mark	ESP [Pa]
*1	150
*2	100
*3	40

Fan characteristics (2)
Field setting with remote control



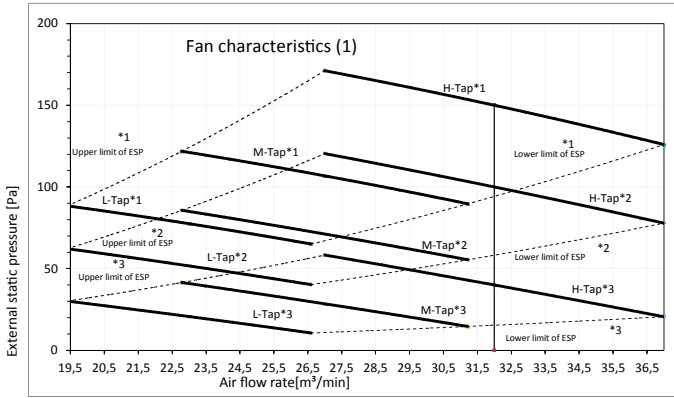
1. Upper limit of ESP by air flow auto adjustment
2. Lower limit of ESP by air flow auto adjustment

Notes
1. The fan characteristics shown are in "fan only" mode.
2. ESP: External Static Pressure

3D095692A

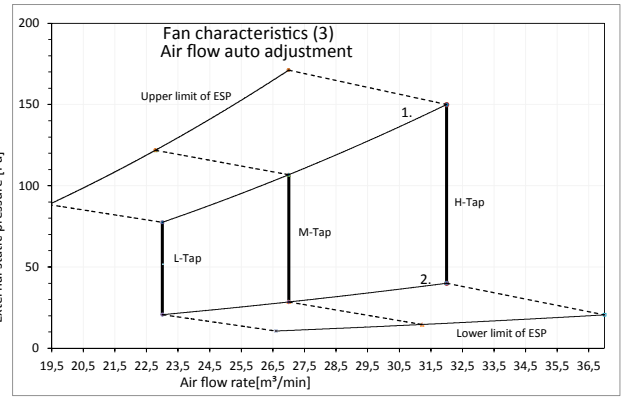
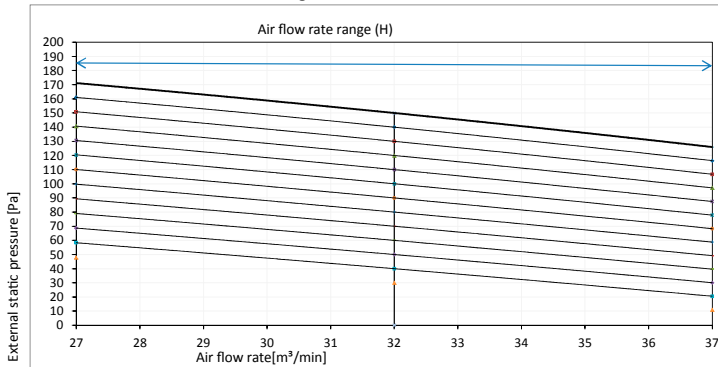


FXSQ100A



Mark	ESP [Pa]
*1	MAX 150
*2	- 100
*3	STD 40

Fan characteristics (2)
Field setting with remote control



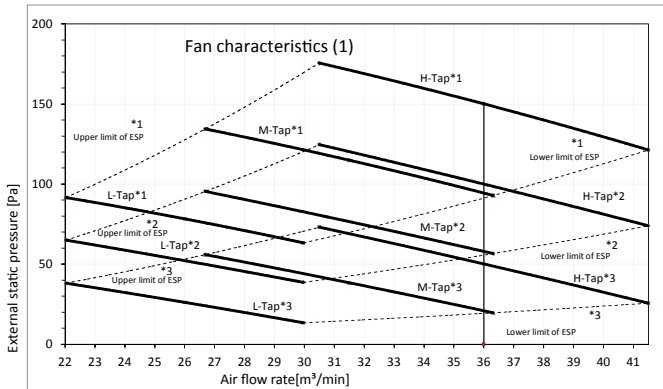
1. Upper limit of ESP by air flow auto adjustment
2. Lower limit of ESP by air flow auto adjustment

Notes

1. The fan characteristics shown are in "fan only" mode.
2. ESP: External Static Pressure

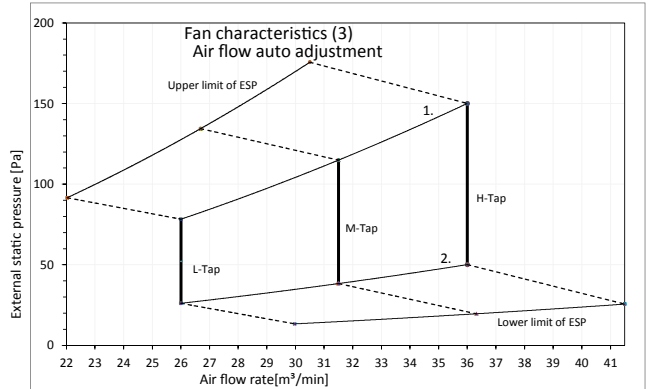
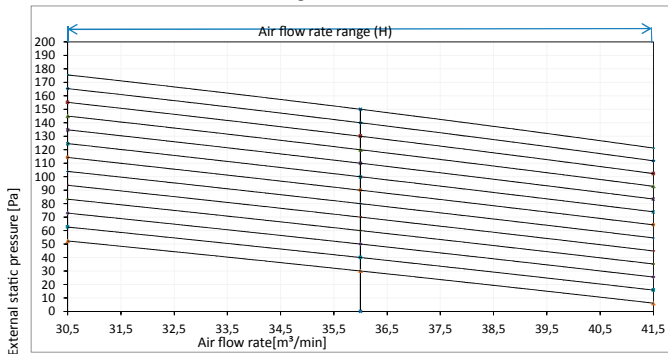
3D095696A

FXSQ125A



Mark	ESP [Pa]
*1	MAX 150
*2	- 100
*3	STD 50

Fan characteristics (2)
Field setting with remote control



1. Upper limit of ESP by air flow auto adjustment
2. Lower limit of ESP by air flow auto adjustment

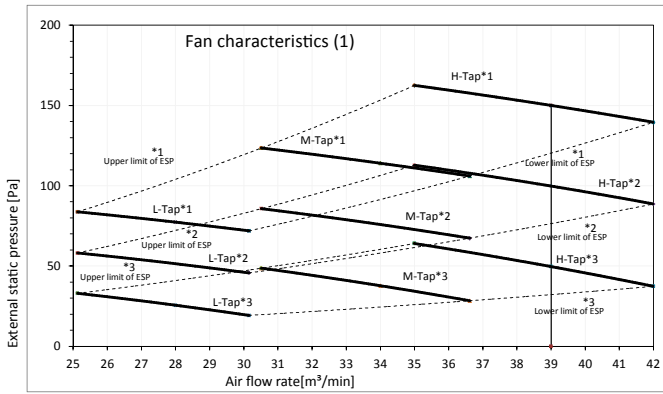
Notes

1. The fan characteristics shown are in "fan only" mode.
2. ESP: External Static Pressure

3D095697A

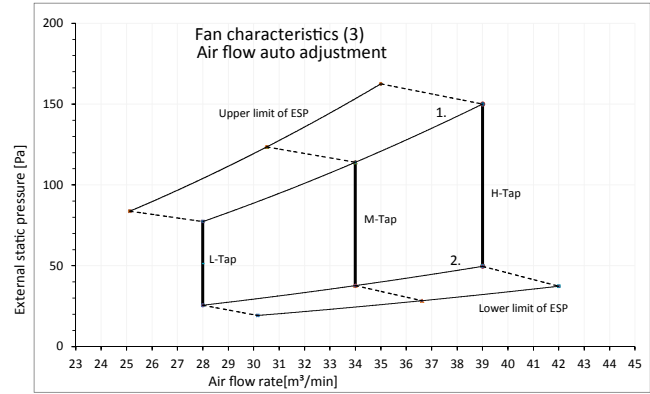
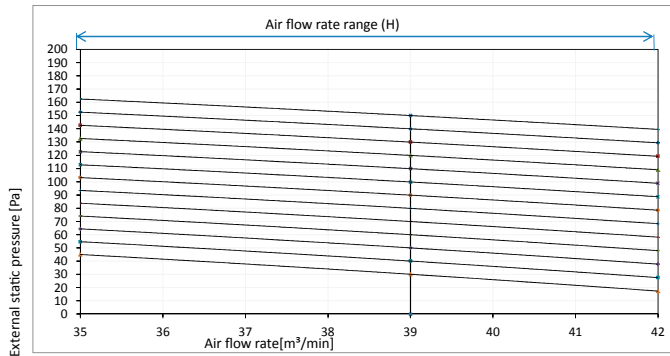


FXSQ140A



Mark		ESP [Pa]
*1	MAX	150
*2	-	100
*3	STD	50

Fan characteristics (2)
Field setting with remote control



1. Upper limit of ESP by air flow auto adjustment
2. Lower limit of ESP by air flow auto adjustment

- Notes
1. The fan characteristics shown are in "fan only" mode.
 2. ESP: External Static Pressure

3D096688A